

# West Bridgewater Plaza

W. Bridgewater, MA

West Bridgewater Plaza has become a mainstay for its surrounding community of consumers in W. Bridgewater, MA (a suburb of Boston). Located on North Main Street (SR 28), a new Dollar Tree and high-performing Pump & Jump heads up West Bridgewater Plaza’s impressive tenant roster. Additional categories include banking, retail and other day-to-day consumer errands.

Traffic Count - 7,225 per day

## Overview

**2077 N. Main St.  
W. Bridgewater, MA 02379**

**For Lease**

**County:** Plymouth

**Type:** Retail

**Total SF:** 133,039

## Retailers Include

Dollar Tree  
Pump & Jump

## Leasing Representative

**Melanie Medeiros**

📍 500 Franklin Village Drive, Ste 110  
Franklin, MA 02038

📞 508-365-3526

📠 508-541-0082

✉️ mmedeiros@cdrt.com

## Property Manager

**Michael Amenabar**

📍 500 Franklin Village Drive, Ste 110  
Franklin, MA 02038

📞 508-365-3521

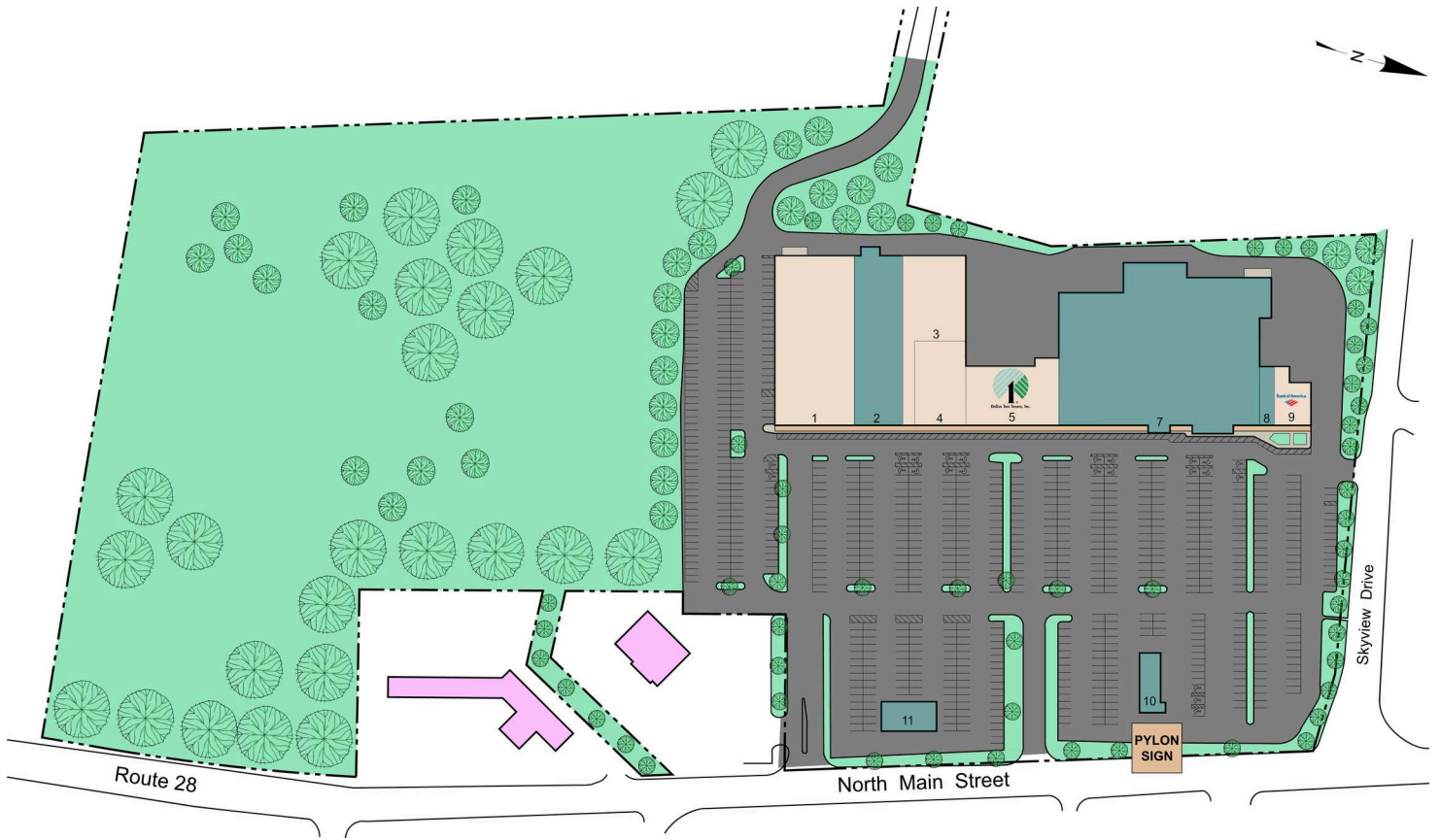
📠 508-570-6573

📠 508-541-0082

✉️ mamenabar@cdrt.com

Demographics	3 Miles	5 Miles	7 Miles
Population	58,189	150,654	216,935
Households	20,531	53,804	78,061
Median HH Income (\$)	59,204	65,527	70,623

# West Bridgewater Plaza - Site Plan



1	Pump & Jump	25,000 SF	7	Available	57,315 SF
2	Available	15,000 SF	8	Available	1,600 SF
3	It's a Yard Sale-Thrift Store	12,284 SF	9	Bank of America	3,340 SF
4	Fotoboyz Boston	8,000 SF	10	Available	
5	Dollar Tree	10,500 SF	11	Available	



**Corporate Headquarters**  
 44 South Bayles Avenue  
 Port Washington, NY 11050  
 516.767.6492